



## Has the Microbiota Played a Critical Role in the Evolution of the Adaptive Immune System?

Yun Kyung Lee, *et al.*  
*Science* **330**, 1768 (2010);  
DOI: 10.1126/science.1195568

*This copy is for your personal, non-commercial use only.*

**If you wish to distribute this article to others**, you can order high-quality copies for your colleagues, clients, or customers by [clicking here](#).

**Permission to republish or repurpose articles or portions of articles** can be obtained by following the guidelines [here](#).

**The following resources related to this article are available online at [www.sciencemag.org](http://www.sciencemag.org) (this information is current as of March 6, 2011):**

**Updated information and services**, including high-resolution figures, can be found in the online version of this article at:

<http://www.sciencemag.org/content/330/6012/1768.full.html>

This article **cites 62 articles**, 11 of which can be accessed free:

<http://www.sciencemag.org/content/330/6012/1768.full.html#ref-list-1>

This article appears in the following **subject collections**:

Immunology

<http://www.sciencemag.org/cgi/collection/immunology>

# Has the Microbiota Played a Critical Role in the Evolution of the Adaptive Immune System?

Yun Kyung Lee and Sarkis K. Mazmanian\*

Although microbes have been classically viewed as pathogens, it is now well established that the majority of host-bacterial interactions are symbiotic. During development and into adulthood, gut bacteria shape the tissues, cells, and molecular profile of our gastrointestinal immune system. This partnership, forged over many millennia of coevolution, is based on a molecular exchange involving bacterial signals that are recognized by host receptors to mediate beneficial outcomes for both microbes and humans. We explore how specific aspects of the adaptive immune system are influenced by intestinal commensal bacteria. Understanding the molecular mechanisms that mediate symbiosis between commensal bacteria and humans may redefine how we view the evolution of adaptive immunity and consequently how we approach the treatment of numerous immunologic disorders.

We are (fortunately) not alone: Humans provide residence to numerous microbial communities comprising hundreds of individual bacterial species. Although teleological design may predict that the immune system evolved to eliminate infectious microbes, we now know that almost every environmentally exposed surface of our bodies is teeming with symbiotic microbes (Fig. 1). These polymicrobial communities contribute profoundly to the architecture and function of the tissues they inhabit and thus play an important role in the balance between health and disease. The notion that commensal microbes critically affect tissue and cell development in humans can be rationalized when this process is viewed from an evolutionary perspective.

Bacteria populated Earth 2 billion years before the first signs of eukaryotic life, and they occupy almost every terrestrial and aquatic niche on our planet. Mitochondria and chloroplasts of eukaryotic cells are descended from bacteria, which suggests that bacteria may have had an active role in the evolution of higher organisms. As multicellular metazoans evolved more complex body plans, bacteria acquired the ability to inhabit new anatomical niches. Animals represent a stable, nutrient-rich ecosystem for microbes to thrive; hence, host health is paramount to the microbiota. In turn, the host benefits from a diverse commensal microbiota that helps to digest complex carbohydrates and provide essential nutrients to mammals.

Symbionts are not the only microbes the host encounters, however. An important challenge faced by the host immune system is to distinguish between beneficial and pathogenic microbes, be-

cause they share similar molecular patterns that are recognized by the innate immune system (such as lipopolysaccharide, peptidoglycan, lipoproteins, and flagellin). Discrimination between specific microbes may be a feature of the adaptive immune system, which can recognize discrete molecular sequences and mount both pro- and anti-inflammatory responses depending on the nature of the antigen. In particular, CD4<sup>+</sup> T cells are quite plastic and differentiate into numerous subsets after development in the thymus and thus are capable of sensing environmental cues from the microbiota. As adaptive immunity evolved in higher vertebrates, the ability of this system to recognize and respond to specific microorganisms may have been driven by evolutionary forces provided by the microbiota itself, resulting in immune functions beyond simply clearing microbial pathogens (which in theory also helps the microbiota by improving host health). Recent evidence shows that the commensal microbiota “programs” many aspects of T cell differentiation, thus augmenting the developmental instructions of the host genome to engender the full function of the adaptive immune system.

Here, we review concepts derived from gnotobiology (Greek for “known life”) to unravel how commensal bacteria promote the development and function of adaptive immunity. In particular, we explore how CD4<sup>+</sup> T helper cell subsets within the gastrointestinal and systemic immune system are shaped (perhaps even controlled) by our microbiota and theorize how and why gut bacteria evolved to so profoundly influence immunologic well-being. Understanding human coevolution with our microbiota may lead to a philosophical and conceptual redefinition of the microbial world and may yield clinical advances toward the treatment of autoimmunity and inflammatory diseases by harnessing the immunomodulatory properties of human commensal bacteria.

## How Does the Microbiota Shape Host Immune Development and Function?

Although microbes reside in several anatomical locations including the skin, vagina, and mouth, the lower gastrointestinal tract of mammals harbors the greatest density and diversity of commensal microorganisms. These include bacteria, archaea, fungi, viruses, protozoans, and (in some cases) multicellular helminths; however, bacteria predominate and reach 100 trillion microbial cells in the colon. Recent efforts to sequence the bacterial genomes of the microbiota (known as the microbiome) have begun to reveal its genetic identity (1) and suggest that our microbiome contains more than 150 times as many nonredundant genes as in the human genome (2). For decades, microbiological techniques to culture bacteria in the laboratory have only identified cultivatable microorganisms, which represent a minority of the microbial species of the gut. The aggregate human microbiota likely contains 1000 to 1150 bacterial species (spread among all people sampled), with each person harboring about 160 bacterial species (2). This suggests that an individual’s microbiome is relatively distinct in composition and is adaptable to environmental changes and/or host genetics.

Germ-free animals (born and raised in the absence of all microbes) provide important insights into how the microbiota affects the host immune system. The development of gut-associated lymphoid tissue (GALT), the first line of defense for the intestinal mucosa, is defective in germ-free mice. Germ-free mice display fewer and smaller Peyer’s patches, smaller and less cellular mesenteric lymph nodes, and less cellular lamina propria of the small intestine relative to animals with a microbiota (3–7). Besides developmental defects in tissue formation, the cellular and molecular profile of the intestinal immune system is also compromised in the absence of symbiotic bacteria. In germ-free mice, intestinal epithelial cells (IECs), which line the gut and form a physical barrier between luminal contents and the immune system, exhibit reduced expression of Toll-like receptors (TLRs) and class II major histocompatibility complex (MHC II) molecules (8, 9), which are involved in pathogen sensing and antigen presentation, respectively. Interspersed between epithelial cells is a specialized population of T cells known as intraepithelial lymphocytes (IELs). IELs from germ-free mice are reduced in number, and their cytotoxicity is compromised (10, 11). Microbial colonization expands specific subsets of intestinal  $\gamma\delta$  T cells (12). Germ-free mice also have reduced numbers of CD4<sup>+</sup> T cells in the lamina propria (13). The development of isolated lymphoid follicles, specialized intestinal structures made of mostly dendritic cells and B cell aggregates, is also dependent on the microbiota (14). Therefore, multiple populations of intestinal immune cells require the microbiota for their development and function.

Division of Biology, California Institute of Technology, Pasadena, CA 91125, USA.

\*To whom correspondence should be addressed. E-mail: sarkis@caltech.edu

The absence of a microbiota also leads to several extra-intestinal defects, including reduced numbers of CD4<sup>+</sup> T cells in the spleen, fewer and smaller germinal centers within the spleen, and reduced systemic antibody levels, which suggests that the microbiota is capable of shaping systemic immunity (15–17). Beyond development, the microbiota also influences functional aspects of intestinal and systemic immunity, including pathogen clearance. Germ-free mice are more susceptible to infectious agents such as *Shigella flexneri*, *Bacillus anthracis*, and *Leishmania* (18). Peptidoglycan from the microbiota enhances neutrophil cytotoxicity after systemic infections by *Streptococcus pneumoniae* and *Staphylococcus aureus* (19). During challenge with *Listeria monocytogenes*, sterile mice harbored an increased bacterial burden in the liver, spleen, and peritoneal cavity (20). Moreover, trafficking of T lymphocytes

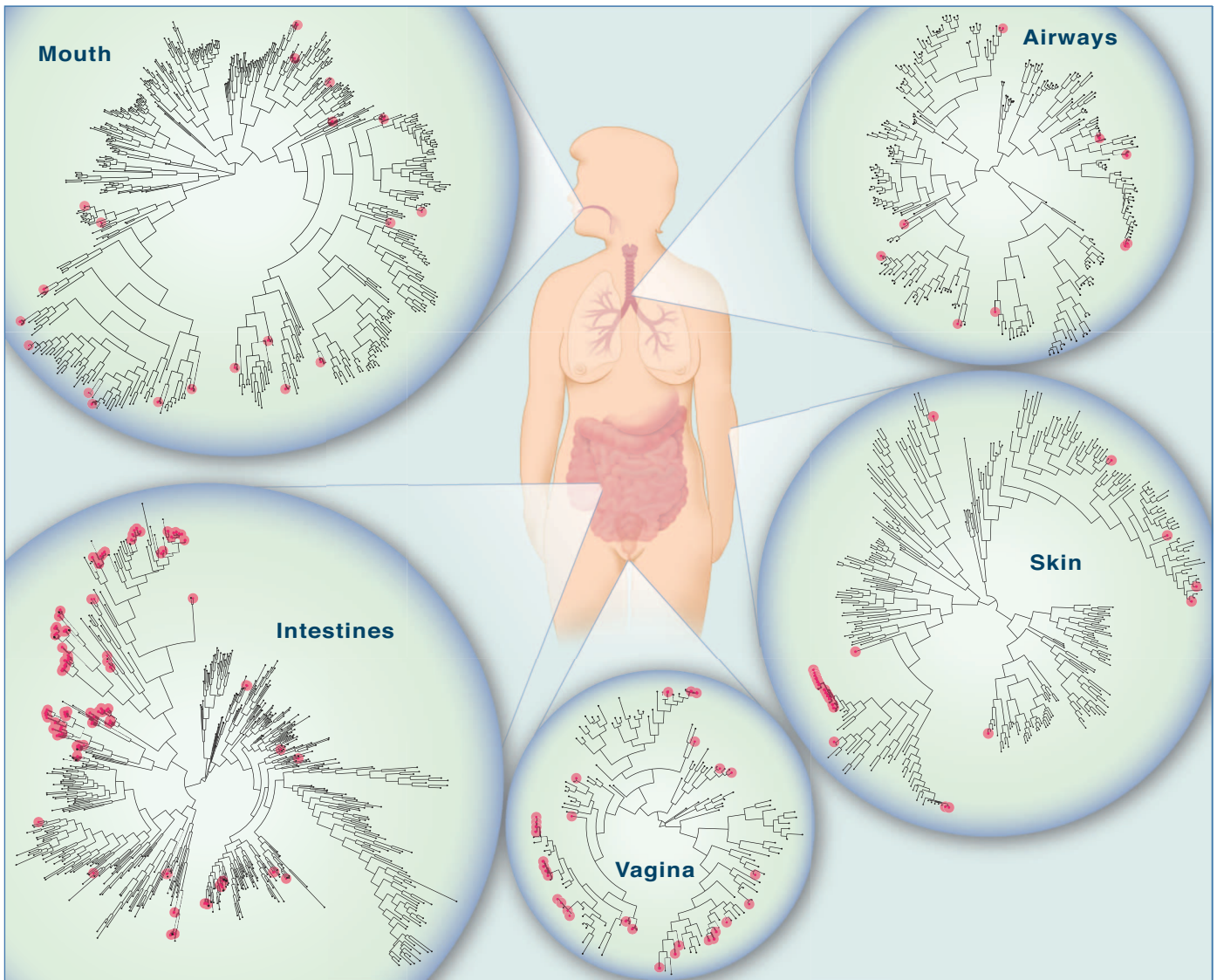
to the peritoneal cavity in response to *Listeria* infection is impaired in germ-free mice (20).

The contributions of the microbiota to the development and function of the immune system appear to be fundamental. A more robust immune system, equipped with a diverse arsenal of cells and molecules, is better able to combat microbial pathogens and ultimately provides a healthier residence for commensal bacteria. This view implies that host mechanisms and the microbiota may have evolved to collaborate against infectious agents. Indeed, several reports show an antagonistic relationship between overt pathogens and the microbiota. For example, *Salmonella* triggers intestinal inflammation, which reduces the numbers and diversity of the microbiota—a process that promotes bacterial infection (21). Depletion of the microbiota diminishes intestinal immune responses that help to control enteric

infections by *Citrobacter rodentium* and *Campylobacter jejuni* (22). Given the role of the microbiota in immune system function, harnessing the immunomodulatory capabilities of the microbiota may offer novel avenues for the development of antimicrobial therapies for infectious disease.

### How Does the Microbiota Provide Signals to Instruct Peripheral Regulatory T Cell Differentiation?

Although many cell types are influenced by the microbiota, we focus here on the emerging role of the microbiota on effector CD4<sup>+</sup> T cell differentiation. After lineage commitment in the thymus, naïve CD4<sup>+</sup> T cells enter the periphery, where they sense environmental signals that further instruct their maturation and function. During an infection, microbial and host signals provide cues to naïve CD4<sup>+</sup> T cells to induce their differentia-



**Fig. 1.** The microbiome of various anatomical locations of the human body. Numerous bacterial species colonize the mouth, upper airways, skin, vagina, and intestinal tract of humans. The phylogenetic trees show the speciation of bacterial clades from common ancestors at each anatomical site. Although the communities in different

regions of the body share similarities, they each have a unique site-specific “fingerprint” made of many distinct microbes. Each site has a very high level of diversity, as shown by the individual lines on the dendrograms. Data are from the NIH-funded Human Microbiome Project; circles represent bacterial species whose sequences are known.



tion into various pro- and anti-inflammatory subsets. For instance, infection by intracellular pathogens drives the development of T helper 1 (T<sub>H</sub>1) cells, whereas extracellular pathogens induce the differentiation of T<sub>H</sub>2 and T<sub>H</sub>17 subsets (23). These proinflammatory cells coordinate many aspects of the innate and adaptive immune response to clear microbial invaders. CD4<sup>+</sup> T cells can also adopt an anti-inflammatory phenotype. Regulatory T cells (Tregs) control unwanted immune system activation and dampen inflammation after microbial infection. Expression of the Treg cell-specific transcription factor Foxp3 (forkhead box P3) induces regulatory phenotypes and functions by CD4<sup>+</sup> T cells (24). Foxp3<sup>+</sup> T cells develop in the thymus shortly after birth, and deletion or depletion of Foxp3<sup>+</sup> T cells leads to severe multi-organ lymphoproliferative disease and autoimmunity (24). Besides the thymus-derived CD4<sup>+</sup>Foxp3<sup>+</sup> T cells (“natural” Tregs), various subsets of Tregs can be generated in the gut from naïve T cells (“inducible” Tregs), some of which produce the anti-inflammatory cytokine interleukin-10 (IL-10) (25–28). Moreover, intestinal bacteria may be critically involved in the differentiation of some gut Treg subsets (29–31). Accordingly, several commensal bacteria (e.g., *Bifidobacteria infantis*, *Faecalibacterium prausnitzii*) have been shown to induce Foxp3<sup>+</sup> Tregs and IL-10 production in the gut (32, 33).

Members of the genus *Bacteroides* are prominent in the mammalian gastrointestinal tract and are also potent stimulators of the mucosal immune system of mammals (34). The gut microorganism *Bacteroides fragilis* has emerged as a model system for the study of immune-bacterial symbiosis. During colonization of mice with *B. fragilis*, the bacterial molecule polysaccharide A (PSA) directs the cellular and physical development of the immune system (16). Moreover, *B. fragilis* is able to prevent intestinal pathology in two independent models of experimental colitis in a PSA-dependent manner (35). Furthermore, in mouse models of experimental colitis, oral treatment of mice with purified PSA protects against weight loss, decreases proinflammatory cytokine expression in the gut, and inhibits lymphocyte infiltration that is associated with disease (35). The protective effects of PSA were likely mediated by CD4<sup>+</sup> T cell production of IL-10, because CD4<sup>+</sup> T lymphocytes from mesenteric lymph nodes of PSA-treated mice produced elevated amounts of IL-10. IL-10-deficient CD4<sup>+</sup> T cells abolished the protective effects of PSA in colitis models. These studies identify PSA as a beneficial microbial molecule that suppresses inflammation-driven host pathology.

No consensus has been reached about whether Foxp3<sup>+</sup> Treg cells in the intestinal tissues of germ-free mice are defective (36–40); however, production of IL-10 is reduced within the GALT of germ-free animals (13, 36, 41). Foxp3<sup>+</sup> Treg cells in the colon of germ-free mice exhibit reduced IL-10 expression, and monocolonization with PSA-producing bacteria (but not PSA-

deficient *B. fragilis*) restores IL-10 expression (42). PSA increases Foxp3 expression by Treg cells, and colonization of germ-free animals with *B. fragilis* augments the in vitro suppressive activity of Tregs in a PSA-dependent manner (42). PSA protects and cures animals from experimental colitis by inducing Foxp3<sup>+</sup> Treg cells and IL-10 production (42). Recently, it was shown that a defined set of *Clostridium* strains induce Foxp3<sup>+</sup> Tregs that produce IL-10 in the colon and protect animals from colitis (43). These findings imply that optimal Foxp3<sup>+</sup> Treg cell differentiation in the colon requires signals from the microbiota and the host genome. They also suggest that specific commensal bacteria may have evolved to promote Treg cell differentiation in the gut to actively engender mucosal tolerance. If validated in human disease, these findings may lead to probiotic therapies for colitis based on microbial-driven Treg induction.

### How Does the Microbiota Instruct T Helper Cell Differentiation?

Although the microbiota has been shown to affect the T<sub>H</sub>1-T<sub>H</sub>2 balance in systemic immune compartments (44), studies have not yet observed symbiotic microbial effects on T<sub>H</sub>1 or T<sub>H</sub>2 cells at mucosal surfaces. In contrast, T<sub>H</sub>17 cell development in the gut is specifically affected by commensal bacteria (45). Germ-free mice are deficient in the production of IL-17 from CD4<sup>+</sup> T cells (the hallmark cytokine of T<sub>H</sub>17 cells) of the small intestinal lamina propria (39). Only a minor defect was noted for  $\gamma\delta$  T cells, which suggests that the lack of T<sub>H</sub>17 cells was not due to an overall deficiency in immune activation and that specific features of the immune response are sensitive to the microbiota. One mechanism of intestinal T<sub>H</sub>17 cell differentiation may be production of adenosine 5'-triphosphate (ATP) in the lamina propria by commensal bacteria, which drives the production of T<sub>H</sub>17-inducing cytokines by resident lamina propria cells (46). Germ-free animals display a reduction in fecal ATP amounts, and treatment of mice with a nonhydrolyzable ATP analog increased the number of gut T<sub>H</sub>17 cells (46).

Not all bacterial species of the microbiota are similar in their ability to promote nonpathogenic T cell responses during normal colonization of animals. Of the numerous bacterial phylotypes that constitute the normal microbiota of mice, only segmented filamentous bacteria (SFBs) have been shown to direct intestinal T helper cell development. A role for SFBs was identified by reconstituting germ-free mice with various subsets of bacterial consortia and measuring cytokine production in gut mucosal tissues (41). SFBs, which are known to tightly adhere to the intestinal mucosa (and to Peyer's patches of the ileum), induced the development of T helper cells in the lamina propria and in cell aggregates of Peyer's patches. This activity was greatly reduced even when very complex groups of bacteria were tested if they were missing SFBs. In a contemporary report, a comparison of the micro-

biota of mice that contained T<sub>H</sub>17 cells with mice deficient in these cells identified SFBs as being sufficient to restore T<sub>H</sub>17 cells to germ-free mice and conventionally raised mice that lack T<sub>H</sub>17 cells (47). Gene expression analysis showed that SFBs induce a spectrum of intestinal immune responses including production of cytokines and chemokines, antimicrobial peptides, and serum amyloid A (SAA), which was shown in vitro to support T<sub>H</sub>17 cell differentiation (47). SFB colonization protected animals from intestinal infection with *C. rodentium*, a bacterial pathogen of animals that causes acute intestinal inflammation similar to enteropathogenic *Escherichia coli* in humans (47).

Thus, commensal SFBs induce a tonic (or controlled) inflammatory response in the gut through T<sub>H</sub>17 cell development that does not cause pathology and is protective against infection with pathogenic bacteria. These new studies build on research done several decades ago, which showed that SFBs promote germinal center development, mucosal immunoglobulin A responses, and recruitment of intraepithelial lymphocytes (48–50). Collectively, it appears that only a particular subset of bacteria from the gut microbiota directly influences T<sub>H</sub>17 immune responses during steady-state colonization.

### Are Noninfectious Human Diseases Influenced by the Microbiota?

Numerous autoimmune diseases result from dysregulation of the adaptive immune system. The incidences of autoimmune diseases such as multiple sclerosis (MS), type 1 diabetes (T1D), and rheumatoid arthritis (RA) are rapidly increasing in Western societies, suggesting alterations in environment factors that regulate the adaptive immune system. As appreciation for the immunomodulatory potential of commensal bacteria has increased, we and others have proposed that lifestyle changes have caused a fundamental alteration in our association with the microbial world (51, 52). Altered diets, widespread antibiotic use, and other societal factors in developed countries may result in an unnatural shift in the community composition of a “healthy” microbiota, leading to altered microbial colonization known as dysbiosis. Whether dysbiosis causes any human disease is yet unproven (insights may come from microbiome sequencing projects); however, evidence in mice suggests that dysbiosis may affect autoimmunity by altering the balance between toleragenic and inflammatory members of the microbiota (Fig. 2). PSA from *B. fragilis*, previously shown to treat experimental colitis in the gut, is also able to prevent and cure experimental autoimmune encephalomyelitis (EAE, an animal model for multiple sclerosis) (53). Oral treatment of animals with PSA reduced T<sub>H</sub>17 cell development and increased Treg numbers in the central nervous system (CNS). Furthermore, germ-free animals display reduced T<sub>H</sub>17 cell numbers in the spleen and spinal cords, and do not develop RA or EAE (inflammation in joints and in the CNS, respectively) (54, 55). The inflammatory responses in

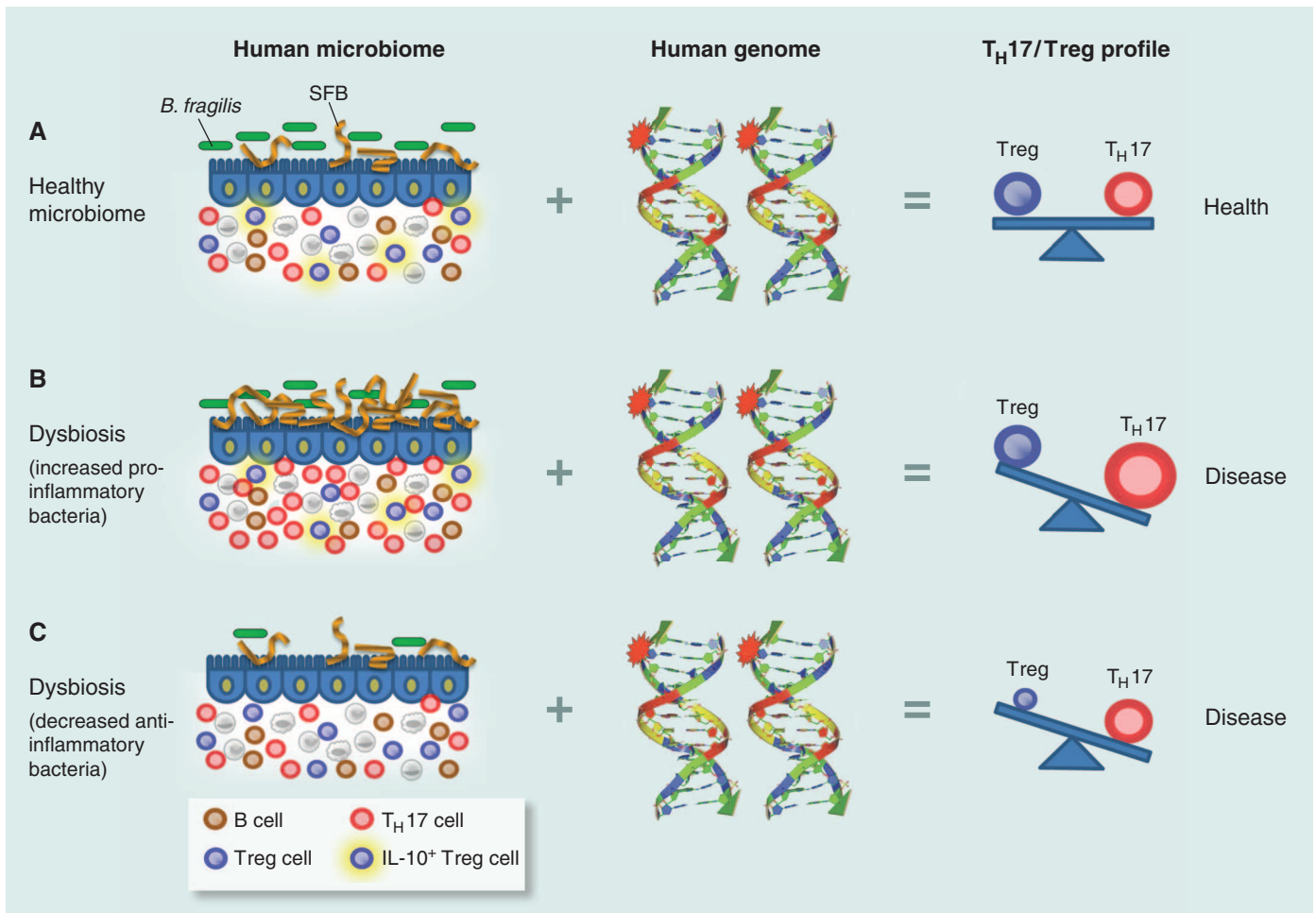
both RA and EAE are promoted by  $T_H17$  cells and prevented by Tregs, which suggests that the effects of gut bacteria on the adaptive immune system likely extend beyond the gastrointestinal tract to influence autoimmune diseases that are seemingly unrelated to microbial infections.

Why only specific commensal bacteria induce  $T_H17$  cell differentiation remains unclear.  $T_H17$  responses are critical at mucosal surfaces to control infections by extracellular pathogens. IL-17 production recruits neutrophils to the site of infection and induces antimicrobial peptide expression and other mediators of immunity. If there is an evolutionary rationale for the ability of SFBs to induce  $T_H17$  cell differentiation, one interpretation is that they mediate a state of “controlled inflammation” that prepares the gastrointestinal

tract for an invading pathogen. SFBs are not overt pathogens and colonize animals as symbionts, and thus  $T_H17$  induction may lead to more enhanced immune responses that protect against acute infectious agents (such as *C. rodentium*). Besides this beneficial outcome, it appears that SFB colonization also leads to adverse host effects.  $T_H1$  and  $T_H17$  cells of the adaptive immune system promote autoimmunity. As a result, microbes that stimulate T helper cell development may (inadvertently) also increase the inherent immune reactivity of the host, potentially leading to host-destructive pathologies mediated by the adaptive immune system. This notion is supported by a role for SFBs in promoting RA and EAE during induced animal models, both of which involve  $T_H17$  cell inflammation (54, 55).

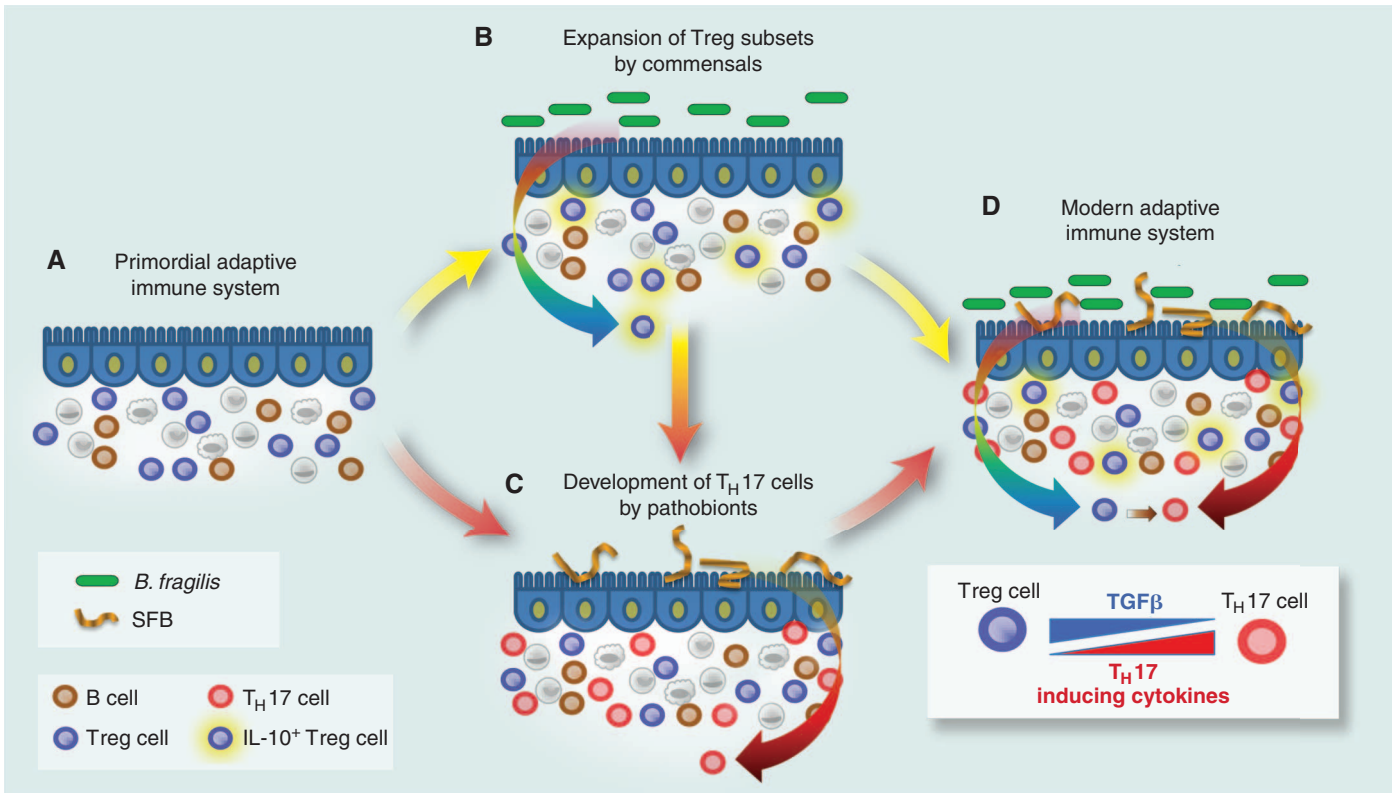
The enhancement of RA and EAE by SFBs establishes that the microbiota can adversely influence autoimmune disease outside the gut. Therefore, SFBs can colonize healthy animals without causing illness; however, when the host is immunocompromised or under inflammatory conditions, SFBs can be detrimental.

We propose that certain microbes, such as SFBs, that can peacefully coexist with a healthy host but still retain pathogenic potential be termed “pathobionts” to distinguish them from opportunistic pathogens that are acquired from the environment and cause acute infections (56). Pathobionts may represent microorganisms on the evolutionary continuum between acute pathogens and commensal microbes, whose sustained relationships with the host induce the development of additional



**Fig. 2.** How the microbiome and the human genome contribute to inflammatory disease. In a simplified model, the community composition of the human microbiome helps to shape the balance between immune regulatory (Treg) and proinflammatory ( $T_H17$ ) T cells. The molecules produced by a given microbiome network work with the molecules produced by the human genome to determine this equilibrium. (A) In a healthy microbiome, there is an optimal proportion of both pro- and anti-inflammatory organisms (represented here by SFBs and *B. fragilis*), which provide signals to the developing immune system (controlled by the host genome), leading to a balance of Treg and  $T_H17$  cell activities. In this scenario, the host genome can contain “autoimmune-specific” mutations (represented by the stars), but disease does not develop. (B and C) The genomes of patients with multiple

sclerosis, type I diabetes, rheumatoid arthritis, and Crohn’s disease contain a spectrum of variants that are linked to disease by genome-wide association studies [reviewed in (63)]. Environmental influences, however, are risk factors in all of these diseases. Altered community composition of the microbiome due to life-style, known as dysbiosis, may represent this disease-modifying component. An increase in proinflammatory microbes (for example, SFBs in animal models) may promote  $T_H17$  cell activity to increase and thus predispose genetically susceptible people to  $T_H17$ -mediated autoimmunity (B). Alternatively, a decrease or absence in anti-inflammatory microbes—for example, *B. fragilis* in animal models—may lead to an underdevelopment of Treg cell subsets (C). The imbalance between  $T_H17$  cells and Tregs ultimately leads to autoimmunity.



**Fig. 3.** A model for the coevolution of adaptive immunity with the microbiota. **(A)** The adaptive immune system develops under the control of the vertebrate genome to produce various cell types. The evolutionarily ancient molecule TGF $\beta$  directs the differentiation of Foxp3<sup>+</sup> Treg cells. Although the earliest mammals contained a gut microbiota, bacteria may or may not have influenced features of the primordial adaptive immune system. **(B)** Over millennia of coevolution, commensal microbes (*B. fragilis* used as an example here) produced molecules that networked with the primordial immune system to help expand various Treg cell subsets (for example, IL-10–producing Foxp3<sup>+</sup> Treg cells). This process may have evolved to allow these microorganisms to colonize the gut by inducing antigen-specific tolerance to the microbiota. **(C)** Proinflammatory pathobionts

(such as SFBs) may have induced T<sub>H</sub>17 cell differentiation to increase mucosal defenses against enteric pathogens. **(D)** The modern adaptive immune system may have arisen from two distinct events: Tregs and T<sub>H</sub>17 cell types evolved independently [(A) to (B) and (A) to (C)] or through the sequential development of T<sub>H</sub>17 cells from Treg cell precursors [(A) to (B) to (C) to (D)]. This may have been achieved by a combinatorial signal of TGF $\beta$ , augmented by the addition of IL-6 to promote T<sub>H</sub>17 cell evolution over time (inset). Together, the modulation of Tregs and T<sub>H</sub>17 cells by commensal microorganisms and pathobionts, respectively, appears to shape the immune status of the host and thus represents a possible risk factor for autoimmune diseases that appear to depend on balanced Treg-T<sub>H</sub>17 proportions.

layers of mucosal defense while promoting the unwanted side effect of autoimmune disease. The importance of T<sub>H</sub>17 cell–inducing microorganisms (such as SFBs) to animal models of autoimmunity remains to be further established; caveats exist, such as the fact that animals from colonies devoid of SFBs can develop autoimmune disease. Also, it remains to be determined how the microbiota may contribute to human autoimmunity. SFB colonization of animals, however, does provide a model system for testing concepts linking specific gut bacteria to nonintestinal immune disorders. The identification of bacterial molecules required for SFBs to induce T<sub>H</sub>17 cell responses may reveal why this particular microorganism is capable of promoting the development of proinflammatory T cells. Furthermore, studies that delineate the gene regulatory networks induced by SFB colonization may enhance our understanding of the evolutionary forces that resulted in T<sub>H</sub>17 lineage development.

Autoimmune diseases such as MS, T1D, and RA are associated with a spectrum of genetic polymorphisms, as shown by recent genome-wide association studies. Given that concordance rates

for disease among monozygotic twins are 20 to 40% on average, environmental factors are crucial for the manifestations of symptoms (57). We predict that autoimmunity can result from the combination of an altered human genome and an altered microbiome (Fig. 2). Patients with autoimmunity likely have a genetic landscape that predisposes them to self-reactivity, and in some cases, certain gut bacteria may promote disease by activating the adaptive immune system. Potential future treatments for autoimmunity may include treatment of dysbiosis, because whereas the human genome is static and intransigent to manipulation, the microbiome is conceivably more amenable to therapeutic alterations. Understanding the molecular mechanisms of how symbiotic microbes affect immune reactions to self antigens may provide insight into the causes, and potential cures, for autoimmune diseases.

#### Did the Microbiota Influence the Evolution of Adaptive Immunity?

The adaptive immune system distinguishes between self and foreign antigens and mounts an

appropriate response to clear invading pathogens by recognizing non-self molecules. The microbiota presents a challenge to the adaptive immune system because it contains an enormous foreign antigenic burden, which must be either ignored or tolerated to maintain health. One hypothesis for how this occurs is “immunologic ignorance,” whereby spatial separation of bacteria from the immune system or down-modulation of innate immunity prevents overt inflammation (58). This notion rests on the inability of the innate immune system to distinguish pathogens from symbionts because they share similar molecular patterns (such as TLR ligands). Rather than ignorance, tolerance could also be induced by the microbiota, given the capacity of gut bacteria to induce Treg lineage differentiation. Molecules produced by our microbiome may be considered “self,” because inflammatory bowel disease is thought, in part, to involve a loss of tolerance to antigens of the microbiota. Therefore, it appears that we may tolerate the microbiota in the same way that we tolerate antigens encoded by our own genome. This then raises the question



of whether symbiotic bacteria evolved mechanisms to suppress unwanted inflammation toward the microbiota by actively inducing mucosal tolerance. Several studies now suggest this to be the case (32, 33, 42). The necessity for the microbiota to induce tolerance as a requirement for colonization, if true, provides a rationale for why symbiotic bacteria may have influenced critical aspects of the adaptive immune system throughout mammalian evolution.

Although T cells can adopt numerous effector cell fates (such as  $T_H1$ ,  $T_H2$ ,  $T_H3$ ,  $T_H9$ , etc.), there are common mechanistic foundations to  $T_H17$  and Treg cell development. The differentiation of both lineages is promoted by transforming growth factor  $\beta$  (TGF $\beta$ ); Tregs require TGF $\beta$  (and retinoic acid), whereas TGF $\beta$  and IL-6 promote  $T_H17$  development (23). The central transcription factors for Treg cells and  $T_H17$  cells (Foxp3 and ROR $\gamma$ t, respectively) are coexpressed in naïve and effector CD4<sup>+</sup> T cells, physically interact with each other, and differentially respond to cytokine stimulation to help determine lineage commitment between Foxp3<sup>+</sup> Treg and  $T_H17$  differentiation (59). Furthermore,  $T_H17$  cells can develop from Foxp3<sup>+</sup> Treg cell precursors (60). As mentioned above, germ-free animals show decreased  $T_H17$  cell development in several anatomic locations (39, 46, 54, 55), and recolonization with a microbiota (containing SFBs) promotes  $T_H17$  cells (47, 54, 55).

On the basis of this knowledge, we propose a hypothetical model for how specific commensal bacteria network with an evolving adaptive immune system (Fig. 3). Thymically derived Foxp3<sup>+</sup> Treg cells developed under the control of the evolutionarily ancient molecule TGF $\beta$ . It is tempting to speculate that commensal microbes (for example, *B. fragilis*) may have “learned” to augment this process by further promoting the differentiation of existing Treg cells into expanded subsets, such as those producing IL-10 at mucosal surfaces. This expanded Treg cell repertoire could have provided the host with a mechanism to tolerate foreign antigens of the microbiota. Pathobionts such as SFBs may have further modified the development of adaptive immunity by promoting the differentiation of  $T_H17$  cells, in part from Foxp3<sup>+</sup> precursors. In support of this notion, IL-17 family members have been found only in vertebrates (61). Other proinflammatory cytokines (IL-6, IL-21, and IL-1) along with TGF $\beta$  are required to induce IL-17 production, perhaps suggesting that  $T_H17$  cells might be a more recent invention than Treg cells. Perhaps the evolution of specific immune responses was not mainly driven by pathogens (as is popular assumption), but instead by organisms that developed more sustained relationships with the host such as commensals and pathobionts. As these new symbiotic relationships were forged through host-microbial coevolution, novel additions to the immune system were introduced over millennia. Treg and  $T_H17$  cells provide a powerful means by which mucosal

surfaces can be protected from unwanted inflammatory responses to the microbiota (by Treg cells) while still being capable of potently responding to microbial infections (with  $T_H17$  cells). *B. fragilis* and SFBs represent model organisms that have been experimentally validated to provide these functions; other microbes may possess similar activities. Although this concept requires experimental validation, the coordination of Treg and  $T_H17$  responses appears ideally suited to benefit both the microbiota and the host, and may represent an important evolutionary partnership for human health.

Co-opting an antigen-specific adaptive immune system by the microbiota may extend beyond simply a host-derived process for controlling microbial infections. During cohabitation with the microbiota, evolution of the vertebrate genome occurred under the influence of signals from symbiotic bacteria. In fact, the evolutionary forces that contributed to immune system development during lifelong microbial associations may be dominant relative to those of transient encounters by microbial pathogens (which are rare and opportunistic) (62). Thus, symbiotic microbes may have influenced features of adaptive immune system evolution and function more profoundly than pathogens, possibly to protect both host and microbiota from invading infections.

As an increasing body of knowledge links the microbiota to Treg and  $T_H17$  phenotypes that mediate autoimmunity, it is imperative to determine how signals from the microbiota shape gene regulatory networks within CD4<sup>+</sup> T cells after their thymic development. If these co-evolutionary interactions are relatively recent inventions, is autoimmunity an unwanted side effect from fine-tuning of the peripheral adaptive immune system by the microbiota? As the influences of the microbiota on autoimmune diseases are unraveled, it can be envisioned that harnessing the ability of the microbiota to induce tolerance through Treg cells may provide novel treatments for autoimmunity by correcting immunologic imbalances found in an evolving adaptive immune system. Finally, because we harbor 10 times as many bacterial cells as human cells, explorations into how the microbiota may have influenced the evolution of adaptive immunity might redefine how we view our “microbial selves.”

#### References and Notes

1. P. J. Turnbaugh *et al.*, *Nature* **449**, 804 (2007).
2. J. Qin *et al.*, *Nature* **464**, 59 (2010).
3. P. G. Falk, L. V. Hooper, T. Midtvedt, J. I. Gordon, *Microbiol. Mol. Biol. Rev.* **62**, 1157 (1998).
4. A. J. Macpherson, N. L. Harris, *Nat. Rev. Immunol.* **4**, 478 (2004).
5. M. Pollard, N. Sharon, *Infect. Immun.* **2**, 96 (1970).
6. H. Hoshi *et al.*, *Tohoku J. Exp. Med.* **166**, 297 (1992).
7. J. R. Glaister, *Int. Arch. Allergy Appl. Immunol.* **45**, 719 (1973).
8. A. Lundin *et al.*, *Cell. Microbiol.* **10**, 1093 (2008).
9. S. Matsumoto, H. Setoyama, Y. Umesaki, *Gastroenterology* **103**, 1777 (1992).
10. A. Imaoka *et al.*, *Eur. J. Immunol.* **26**, 945 (1996).
11. Y. Umesaki, H. Setoyama, S. Matsumoto, Y. Okada, *Immunology* **79**, 32 (1993).

12. J. Duan, H. Chung, E. Troy, D. L. Kasper, *Cell Host Microbe* **7**, 140 (2010).
13. J. H. Niess, F. Leithäuser, G. Adler, J. Reimann, *J. Immunol.* **180**, 559 (2008).
14. D. Bouskra *et al.*, *Nature* **456**, 507 (2008).
15. M. C. Noverr, G. B. Huffnagle, *Trends Microbiol.* **12**, 562 (2004).
16. S. K. Mazmanian, C. H. Liu, A. O. Tzianabos, D. L. Kasper, *Cell* **122**, 107 (2005).
17. H. Bauer *et al.*, *Am. J. Pathol.* **42**, 471 (1963).
18. K. Smith, K. D. McCoy, A. J. Macpherson, *Semin. Immunol.* **19**, 59 (2007).
19. T. B. Clarke *et al.*, *Nat. Med.* **16**, 228 (2010).
20. H. Inagaki, T. Suzuki, K. Nomoto, Y. Yoshikai, *Infect. Immun.* **64**, 3280 (1996).
21. B. Stecher *et al.*, *PLoS Biol.* **5**, e244 (2007).
22. C. Lupp *et al.*, *Cell Host Microbe* **2**, 119 (2007).
23. E. Bettelli *et al.*, *Nature* **441**, 235 (2006).
24. J. D. Fontenot *et al.*, *Immunity* **22**, 329 (2005).
25. A. Foussat *et al.*, *J. Immunol.* **171**, 5018 (2003).
26. M. Battaglia, S. Gregori, R. Bacchetta, M. G. Roncarolo, *Semin. Immunol.* **18**, 120 (2006).
27. S. Sakaguchi *et al.*, *Cell* **133**, 775 (2008).
28. Y. P. Rubtsov *et al.*, *Immunity* **28**, 546 (2008).
29. J. L. Coombes *et al.*, *J. Exp. Med.* **204**, 1757 (2007).
30. M. Boirivant, W. Strober, *Curr. Opin. Gastroenterol.* **23**, 679 (2007).
31. J. L. Coombes, K. J. Maloy, *Semin. Immunol.* **19**, 116 (2007).
32. C. O'Mahony *et al.*, *PLoS Pathog.* **4**, e1000112 (2008).
33. H. Sokol *et al.*, *Proc. Natl. Acad. Sci. U.S.A.* **105**, 16731 (2008).
34. S. K. Mazmanian, D. L. Kasper, *Nat. Rev. Immunol.* **6**, 849 (2006).
35. S. K. Mazmanian, J. L. Round, D. L. Kasper, *Nature* **453**, 620 (2008).
36. U. G. Strauch *et al.*, *Gut* **54**, 1546 (2005).
37. S. Östman, C. Rask, A. E. Wold, S. Hultkrantz, E. Telemo, *Eur. J. Immunol.* **36**, 2336 (2006).
38. B. Min *et al.*, *Eur. J. Immunol.* **37**, 1916 (2007).
39. I. I. Ivanov *et al.*, *Cell Host Microbe* **4**, 337 (2008).
40. C. Zaph *et al.*, *J. Exp. Med.* **205**, 2191 (2008).
41. V. Gaboriau-Routhiau *et al.*, *Immunity* **31**, 677 (2009).
42. J. L. Round, S. K. Mazmanian, *Proc. Natl. Acad. Sci. U.S.A.* **107**, 12204 (2010).
43. K. Atarashi *et al.*, *Science* 10.1126/science.1198469 (2010).
44. R. Dobber, A. Hertogh-Huijbregts, J. Rozing, K. Bottomly, L. Nagelkerken, *Dev. Immunol.* **2**, 141 (1992).
45. I. I. Ivanov *et al.*, *Cell* **126**, 1121 (2006).
46. K. Atarashi *et al.*, *Nature* **455**, 808 (2008).
47. I. I. Ivanov *et al.*, *Cell* **139**, 485 (2009).
48. J. Snel *et al.*, *Can. J. Microbiol.* **44**, 1177 (1998).
49. G. L. Talham, H. Q. Jiang, N. A. Bos, J. J. Cebra, *Infect. Immun.* **67**, 1992 (1999).
50. Y. Umesaki, Y. Okada, S. Matsumoto, A. Imaoka, H. Setoyama, *Microbiol. Immunol.* **39**, 555 (1995).
51. M. C. Noverr, G. B. Huffnagle, *Clin. Exp. Allergy* **35**, 1511 (2005).
52. J. L. Round, S. K. Mazmanian, *Nat. Rev. Immunol.* **9**, 313 (2009).
53. J. Ochoa-Repáraz *et al.*, *Mucosal Immunol.* **3**, 487 (2010).
54. H. J. Wu *et al.*, *Immunity* **32**, 815 (2010).
55. Y. K. Lee *et al.*, *Proc. Natl. Acad. Sci. U.S.A.* 10.1073/pnas.1000082107 (2010).
56. J. Chow, S. K. Mazmanian, *Cell Host Microbe* **7**, 265 (2010).
57. S. E. Baranzini *et al.*, *Nature* **464**, 1351 (2010).
58. L. V. Hooper, *Nat. Rev. Microbiol.* **7**, 367 (2009).
59. L. Zhou *et al.*, *Nature* **453**, 236 (2008).
60. X. O. Yang *et al.*, *Immunity* **29**, 44 (2008).
61. C. T. Weaver, R. D. Hatton, P. R. Mangan, L. E. Harrington, *Annu. Rev. Immunol.* **25**, 821 (2007).
62. M. McFall-Ngai, *Nature* **445**, 153 (2007).
63. S. E. Baranzini, *Curr. Opin. Immunol.* **21**, 596 (2009).
64. We thank members of the Mazmanian laboratory for their critical review of the manuscript. Supported by NIH grants DK078938, DK083633, and AI088626; the Damon Runyon Cancer Research Foundation; and the Crohn's and Colitis Foundation of America (S.K.M.).

10.1126/science.1195568